

You can't have whole house music without in-wall wiring, and in this case, the more the better.

## The Beutler Difference—Flexible Wiring

Enhanced distributed audio wiring from Beutler consists of four wires that run to or from a volume control location. These wires can be combined in a variety of ways to offer maximum flexibility in your choice of whole house music systems. These wires are:

- Speaker wire used to carry power from the central equipment location to the volume control.
- Two speaker wires run from the volume control up to either the left or right speaker to drive them.
- A Category 5, eight-conductor wire run from the central equipment location to the volume control, providing remote control and communication capabilities.

## There's a System for Everyone!

**Multi-Zone / Single-Source systems** are the standard and consist of wiring to speakers in multiple locations and having a local volume control for each designated area. This is the minimum configuration for a system that gives isolated control, works for many simple applications, and is relatively inexpensive. However, with this system you are limited to one source of music in all of the rooms and you can't change anything but the volume without a walk to the source.

**Multi-Zone / Single-Source systems with IR Control** adds an IR receiver to the amplified volume control to give you control of the system. This will allow you to use a remote control to switch sources and control the source equipment from any location. However, all rooms still share to the same source.

**Multi-Zone / Multi-Source systems** offer much more flexibility. These systems have separate amplifier channels for each zone and a keypad in each room that allows you to control the volume and source. Now you can have different music playing in different rooms.

**Multi-Zone / Multi-Source Audio/Video systems** offer the highest range of flexibility. These systems have the capability to not only control audio sources and volume, but video sources on multiple TVs as well. With this setup you can share video components from room to room (such as a DVD player).

## The Perfect Setting for Any Event

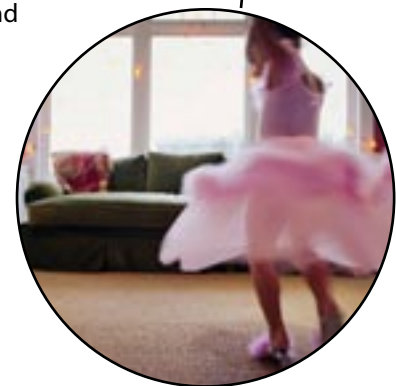
Whole house music can make special events more special. From holiday music, to romantic settings and family parties, distributed audio sets the mood. And it's not just for music, distributed audio can play news, sporting events, audio from a TV show, or a movie soundtrack.

You could use your distributed audio system to listen to a variety of sources, including:

- Satellite Radio
- Cable Radio
- Internet Radio
- Hard Drive Systems
- AM/FM Radio
- CD or DVD player

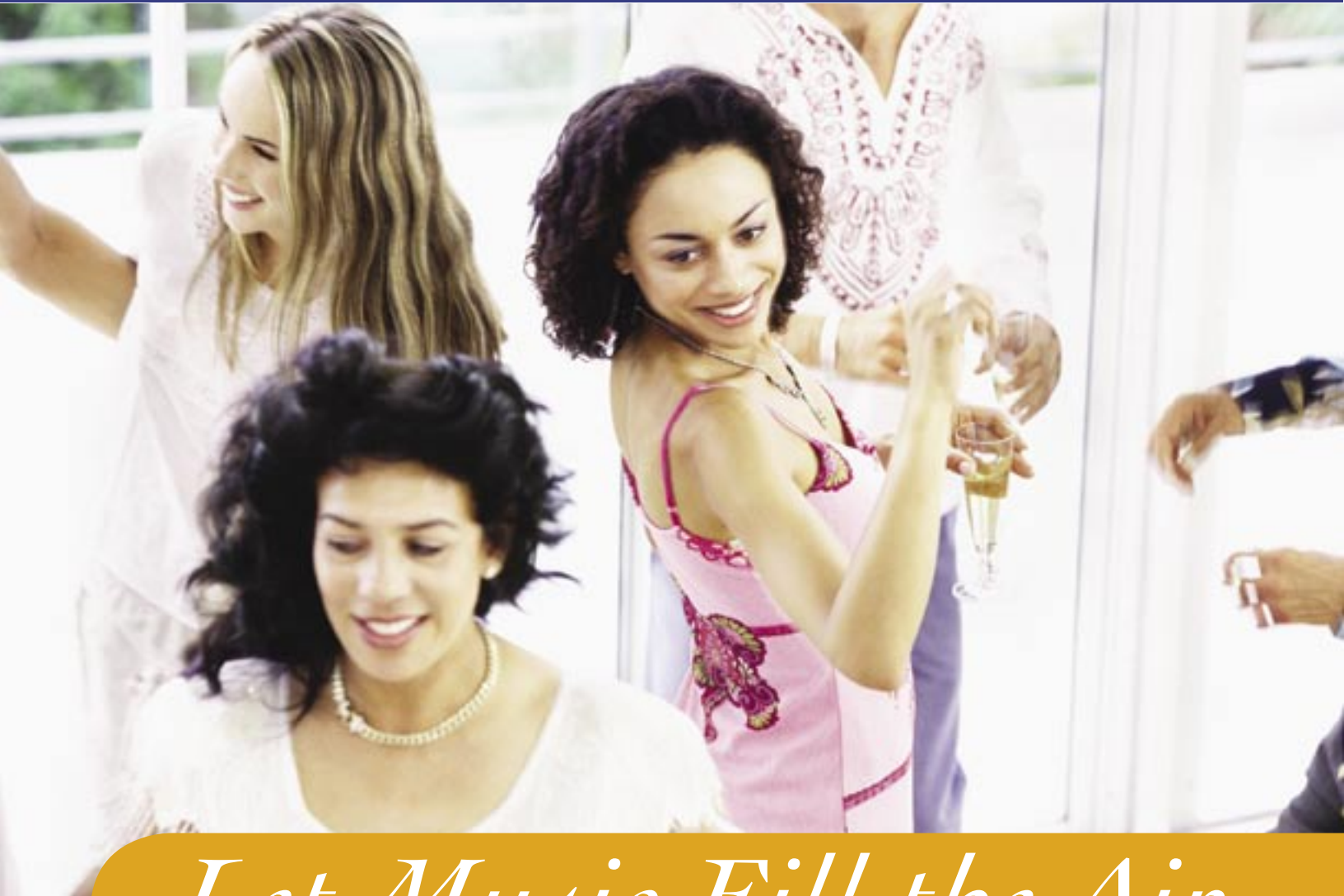
## Don't Miss Your Chance for Whole House Entertainment

The best part is whole house music is now more affordable than ever before. Systems have come down in price and prewiring a home while it is being built adds little to the overall cost of the home, while substantially increasing its resale value. Many options can even be incorporated into the monthly payment. Don't miss your chance for entertainment that will make your whole house more enjoyable!



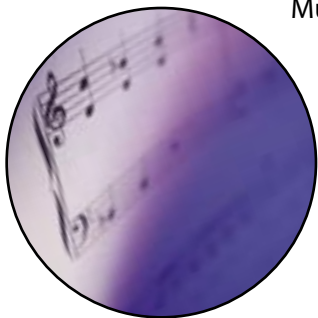
4700 Lang Avenue, McClellan, CA 95622  
916.646.2222 • www.beutler.com • Lic. #162634  
© 2005 Beutler Corporation. All rights reserved.





# *Let Music Fill the Air*

*Whole house music for your new home.*



Music—the mention of the word summons a flurry of images and emotions, but most importantly, music can set a mood. Whether at an upscale restaurant, in a refined shopping environment, or at an elegant hotel, background music is used to enhance the enjoyment of an experience. Now you can get the same sense of enjoyment from music in your new home.

There is nothing like having the ability to listen to your favorite music anywhere in your home: it's like having your own personal soundtrack with you wherever you go. Now imagine you can control the source of the music, the volume, and the location where it's playing as you move about your home. You can run your household while you listen to the radio, a new CD, or even an audio book.

***Speakers***

***Volume Controls***

***Speaker Selectors***

***Receivers***

***In-Wall Wiring***

***Multi Zone Systems***



# Wire Before the Walls GO UP

Even if whole house music (a.k.a.: distributed audio) is only something you are considering, it is crucial that the necessary wires be run while your home is being built. According to a case study by the Distributed Audio Alliance ([www.multiroomaudio.org](http://www.multiroomaudio.org)), *"We urge all of our customers to purchase as much as they can possibly afford during the construction stage while wiring is inexpensive, and the logistics of placing speakers and amplifiers is uncomplicated. When work is delayed until after construction, costs can quadruple."*

**Consider the possibilities of placing speakers in different rooms or spaces in your home. Many builders offer standard speaker locations, with the ability to add additional locations. Some of the most popular are:**

- Master Bedrooms – Relax with music in bed
- Master Bathrooms – Get ready while listening to the news
- Dining Rooms – Host dinner parties with a background of jazz
- Patios – Great for backyard BBQs
- Living Rooms – Entertain with classical or contemporary music, it's up to you

**But don't rule out**

- Kid or Guest Bedrooms – Let others enjoy their own musical preferences
- Additional Bathrooms – Children can be bathing to the oldies
- Recreation Rooms – Dance party in the bonus room!
- Hallways – Never miss a step when dancing from room to room
- Laundry Rooms – We all have to do it, but wouldn't tunes make it more enjoyable?
- Master Closets – Bigger than some bedrooms and some people spend more time in them

Any of these spaces can be a great place to enjoy music in. Let's look at the components that make up a distributed audio system.



# The What's What of Distributed Audio

## In-Wall Wiring

Speakers need wire, no two ways about it. But there is no need to see the wire running all over the floor or up the wall. Speaker and control wire is run during construction so it's hidden from sight once the drywall goes up. Wires will run from the central equipment location, to volume controls in each room, and then on to the speakers inside and outside of the home.



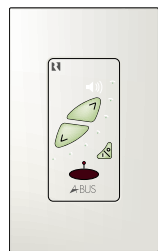
**Standard Volume Control**

## In-Wall Speakers/In-Ceiling Speakers

You want your distributed audio system to be heard and not seen, that's why these speakers are a perfect fit for any system. They are recessed into the walls and ceiling so the music fills your home, not the speakers.

## Standard Volume Controls

Simple rotary dials (like a light dimmer) will allow you to adjust the volume of a pair of speakers in a room. With this basic type of control, all of the rooms in the home share one audio source. The volume controls are usually installed at the entrance to a room, near the light switches. Adjustments other than volume are made at the source equipment.



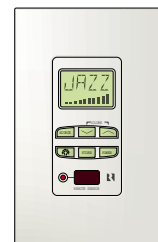
**Amplified Volume Control**

## Amplified Volume Controls

Instead of using an outboard amplifier, amplified volume controls have the power to drive a speaker built right in. These sleek looking units have the ability to be turned completely on or off by remote control, thereby not wasting power, and can even pass remote control signals back to the source equipment.

## Multi-Room/Multi-Source Controllers

Stepping up to more sophisticated controls allows you to play different music in different rooms from different sources. Clear as mud right? Imagine playing a CD in one room, while in another room someone is listening to the radio, all through the same distributed audio system.



**Multi-Room/  
Multi-Source Control**

## Infrared Distribution Systems

Infrared (IR) sensors are built into the volume controls of mid and high end systems to give you greater control from anywhere in your home. With a remote in hand, you will be able to access your system from any volume control in the house.

## Speaker Selectors

If only one audio source (CD, AM/FM, satellite) is being distributed in a basic system, you will want to be able to turn some rooms on or off depending on the occasion. The speaker selector gives you this ability, allowing a single stereo power amplifier to drive multiple pairs of speakers safely.

## Audio/Video Receivers

The receiver provides power to the speakers and serves as an integrated control center for all of your components, often providing both audio and video switching.

